

annual report 2013

June 1, 2012 to May 31, 2013

delivering health & hope to the world



## about us

### mission

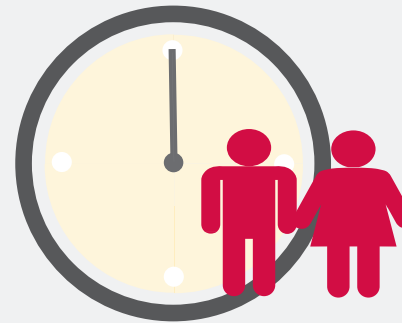
**Project C.U.R.E. identifies, solicits, collects, sorts, and distributes medical supplies and services according to the imperative needs of the world.**

Project C.U.R.E. was founded in 1987 to help bridge staggering health resource gaps in the developing world by matching **medical supplies** and **modern equipment** with facilities in need to empower doctors and nurses with the tools they need to treat disease, deliver vaccines, perform life-saving surgeries and ensure safe childbirth. Project C.U.R.E. operates distribution centers in Colorado, Tennessee, Texas and Arizona and collects excess supplies and specialized equipment from hundreds of U.S. hospitals and medical manufacturers.

Thanks to the dedication of **16,000 volunteers** nationwide, two to three semi-truck trailer sized containers of life-saving aid leave Project C.U.R.E.'s warehouses every week. In addition, Project C.U.R.E. sends volunteer **medical teams** to underserved facilities abroad to provide free care and train local healthcare staff.

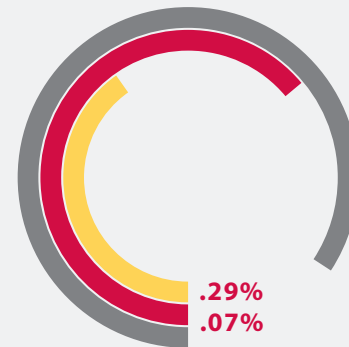
Today, Project C.U.R.E. is the world's largest distributor of donated medical supplies to resource-limited communities across the globe, touching the lives of patients, families, and children in more than **130** countries.

## the need



**6.6** million children under five years of age died in 2012, nearly 750 every hour.

**58%** of deaths in children under age five are caused by infectious diseases. Pneumonia is the largest single cause of death in under-fives.



Official development assistance stands at

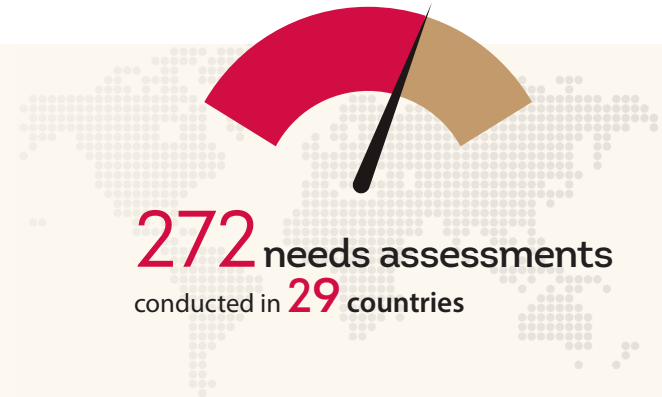
**0.29%** of the combined national income of developed countries, still far short of the 0.7 percent UN target.

Data source: World Health Organization

# community roots & global impact in 2013



**16,000** volunteers donated their service across the country and around the globe. There were also **84,259** volunteer hours spent sorting, inspecting and packing medical donations



**272** needs assessments conducted in **29** countries



**135** semi-truck trailer sized c.u.r.e. cargo containers carried **\$53,000,000** in medical supplies and equipment to **40** countries

**2,771** kits for kids in **20** countries



**3.84** million estimated pounds of usable and valuable medical surplus was redirected from U.S. hospitals and health providers



**333** c.u.r.e. kits & stryker kits delivered

## our programs



### C.U.R.E. Cargo

Project C.U.R.E.'s Cargo program delivers semi-trailer-sized cargo containers carrying medical donations to under-resourced hospitals, clinics and community health centers in developing countries. We manage a complex inspection, inventory and logistics process that annually places millions of dollars worth of medical supplies and modern equipment **directly into the hands** of doctors and nurses so they can provide quality care to their patients, many of whom are **women** and **young children**.

Project C.U.R.E. collaborates with **community partners** in each country to develop a high-level understanding of the scope of need. Our thorough, on-site assessment process ensures that every container delivered will meet the **specific needs** of the recipient hospital or clinic, equipping the medical staff with life-saving tools to improve diagnosis, treatment and care.

**On average, the Project C.U.R.E. cost for the delivery of one container is \$20,000.**

**\$400,000**

is the approximate value of each semi-truck trailer sized container full of medical supplies and equipment.



### C.U.R.E. Kits



**48** lbs. of  
medical supplies

valued at **\$2,000**

**C.U.R.E. Kits** are suitcase-sized, pre-packed kits of basic medical supplies that can be easily transported and **checked as luggage** on a trip to a community in need or in an underserved region of the world.

Typical contents include exam supplies, wound care and personal hygiene items—critical supplies that are desperately lacking in most clinics in developing countries, but are **essential** for medical care.

Additionally, Project C.U.R.E. is a proud partner with Stryker Surgical in providing high-quality orthopedic surgical products.

“Project C.U.R.E. hasn't simply supplied this community center with some medical equipment, supplies and stethoscopes. You have renewed our excitement, restored the hope we had, strengthened our faith and resolve to make a difference...”

—Dr. Peter Kulaba | Kyanja Health Center | Kampala, Uganda



### Kits for Kids

Personal hygiene and **basic “medicine cabinet”** items are scarce in the developing world. If a child gets hurt, families might have to travel a long distance by bicycle, bus, or even on foot to receive care at the nearest hospital or medical clinic.

Working with pediatricians and nurses, Project C.U.R.E. developed **Kits for Kids** to give parents in developing countries the supplies they need to provide basic care at home.

This small but **powerful package**


contains common items such as adhesive bandages, hand sanitizer, toothbrushes and lice shampoo.



The **Kits for Kids** program provides a **fun** way for local schools and **youth groups** to complete **service-learning** projects and are a fun activity for **groups of any size**.

# our programs

 C.U.R.E. Clinics

 PhilanthroTravel

**C.U.R.E. Clinics & PhilanthroTravel** are our international medical clinics trips—where altruism meets adventure.

Volunteers on our trips connect with in-country medical staff, provide healthcare in its purest form and experience unparalleled travel adventures.

Project C.U.R.E. offers **10-12** trips throughout the year, some dedicated exclusively to maternal and infant healthcare.

The average team includes **6-12** medical professionals and a trained C.U.R.E. Clinics team leader. In addition, non-medical participants are welcome to participate. There is great demand for physicians, OB/GYNs, pediatricians, surgeons, nurse practitioners and nurses.

In 2013, Project C.U.R.E. began offering neonatal resuscitation training for birth attendants in several countries as part of a worldwide effort to increase newborn survival rates. And recently, Project C.U.R.E. became a strategic partner of Saving Mothers, Giving Life, a five-year program to reduce maternal mortality in Uganda, Zambia and Malawi.

After **25** years of providing medical relief to more than **130** countries, C.U.R.E. Clinics and PhilanthroTravel are **life-changing** for both participants and patients alike.

 ProC.U.R.E.



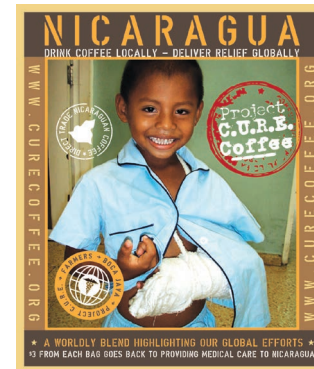
Hospitals, medical manufacturers, distributors and individuals across the U.S. **donate** thousands of tons of **new medical** supplies and **working** medical equipment through our **ProC.U.R.E.** program each year.

We operate large **distribution facilities** [Denver, Houston, Nashville, Phoenix, Chicago-coming soon] to receive, inspect and ship medical donations to communities in need, and have collections centers in **14** states (see page 6).

Donors are given the opportunity to give these **valuable medical resources** another life in places where people shouldn't die of preventable and treatable causes.

Many donors may be eligible for special corporate income-tax benefits by donating to Project C.U.R.E.

 C.U.R.E. Coffee



**C.U.R.E. Coffee**, the direct trade program at Project C.U.R.E. is very simple. Boca Java, a Colorado-based company roasts the coffee fresh to your order, and donates

**\$3 per bag** to Project C.U.R.E.,

to provide medical and humanitarian relief back to the farmers and the surrounding communities near Jinotega, Nicaragua.

Boca Java works directly with coffee growers in Nicaragua to produce high-quality coffee, while providing benefits to the coffee farms who plant, nurture and harvest the beans. Boca Java transacts business directly at the origin to keep the premium price directly in the hands of the community and the farmers. Our socially-responsible coffee goes beyond Fair Trade—it's saving lives!

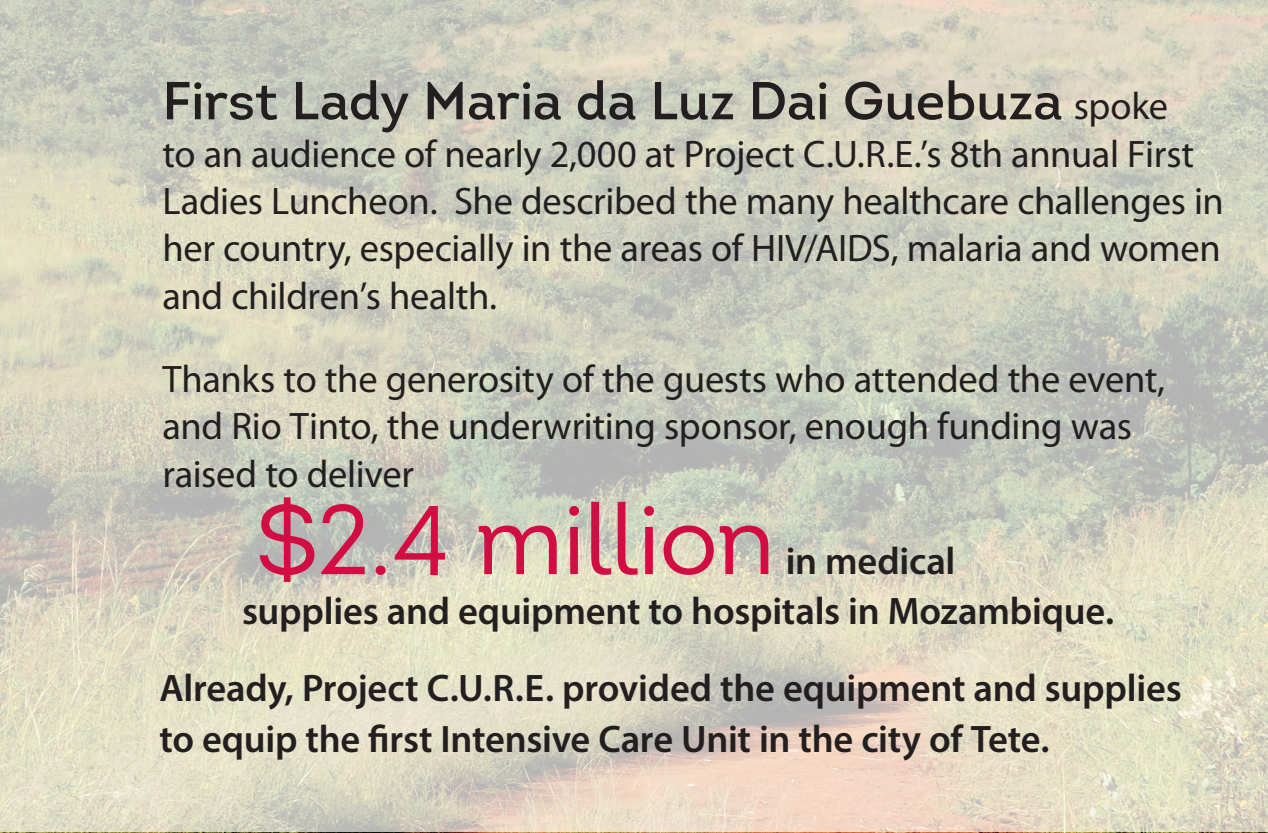
“There is no right more important than the right to health.” —Felipe Calderon | President of Mexico 2006-2012



mozambique

first ladies luncheon

October 12, 2012



**First Lady Maria da Luz Dai Guebuza** spoke to an audience of nearly 2,000 at Project C.U.R.E.'s 8th annual First Ladies Luncheon. She described the many healthcare challenges in her country, especially in the areas of HIV/AIDS, malaria and women and children's health.

Thanks to the generosity of the guests who attended the event, and Rio Tinto, the underwriting sponsor, enough funding was raised to deliver

**\$2.4 million** in medical supplies and equipment to hospitals in Mozambique.

Already, Project C.U.R.E. provided the equipment and supplies to equip the first Intensive Care Unit in the city of Tete.



# countries served in 2013



“As a retired nurse, I can think of no greater use of my professional skills than serving our global community. No matter how busy my life or work gets, I am always re-energized by the hours I spend volunteering. When I am in the Project C.U.R.E. warehouse, I remember the faces of the people in underserved countries that I have been so privileged to care for. That and the mission of Project C.U.R.E. has kept me coming back for seven years.”

—Maribeth Trujillo, MS, RN, NE-BC, Director of Professional Resources | Littleton Adventist Hospital

# our centers

## distribution centers

procure, test, sort, inventory, package, and deliver medical supplies and equipment directly to the hospitals and clinics we serve around the world.

Denver, CO, International Headquarters  
Houston, TX  
Nashville, TN  
Phoenix, AZ  
Chicago, IL (coming soon)



## collection centers

receive, sort and transport medical supplies to distribution centers where they will be tested, inventoried, packaged, and delivered overseas.

Albuquerque, NM	Kentwood, MI
Colorado Springs, CO	Lenexa, KS
Cortland, NY	Lumberton, NC
Dallas, TX	Rolla/Jefferson City, MO
Glenwood Springs, CO	Sarasota, FL
Grand Junction, CO	Wilsonville, OR
Harrisburg, PA	



## board of directors

Bill Pauls, Chairman	Dr. James Jackson
Richard Campbell	Brad Lidge
Charlie Fote	Thomas Malley
Dr. Douglas Jackson	Bruce Schroffel

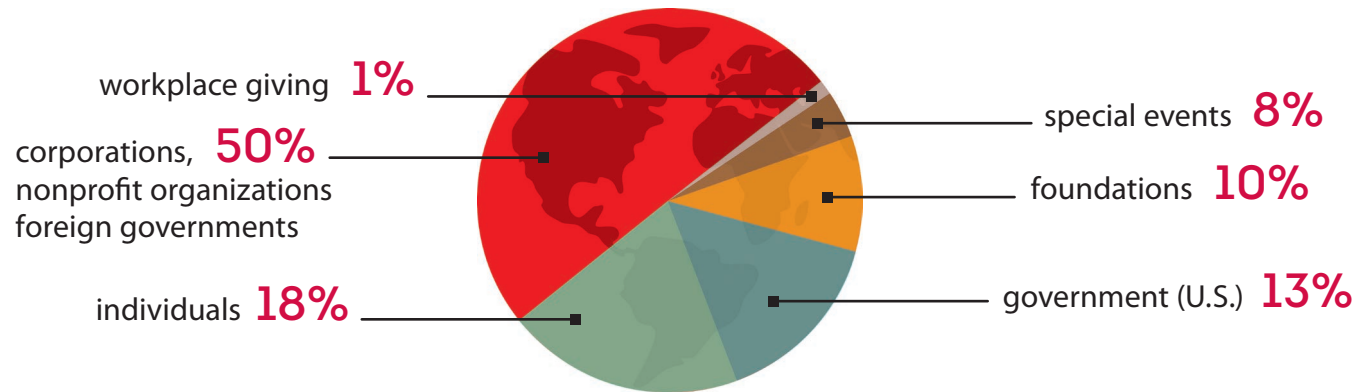




# financials

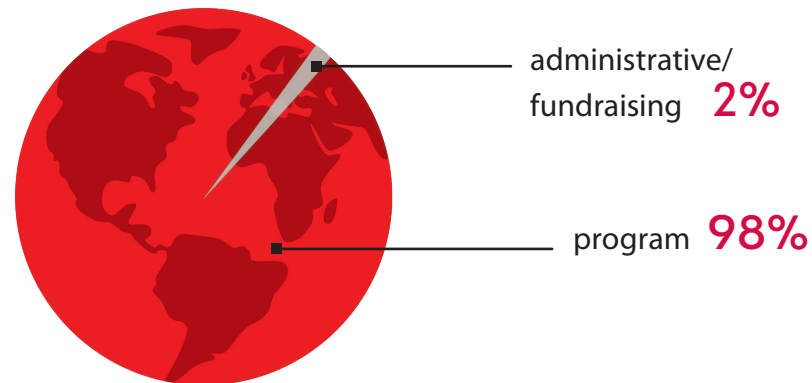
June 1, 2012 to May 31, 2013

## sources of revenue



## use of funds

Project C.U.R.E. operates with just **2%** administrative and fundraising costs, so that **98 cents** of every dollar donated is invested directly into our program.



The financial statements present the financial position of Benevolent Healthcare Foundation dba Project C.U.R.E. All figures are reported in accordance with generally accepted accounting principles in the United States of America.

## how can **you** get involved?



**give** much-needed medical supplies and equipment to developing countries around the world.

**serve** by helping locally at a Project C.U.R.E. warehouse or collection center near you.

**sponsor** an unfunded container.

**travel** on a one-of-a-kind trip where altruism meets adventure.

**take** a C.U.R.E. Kit with you on your travels to a developing country.

**send** a C.U.R.E. Kit with another traveler.

**become** a crowd fundraiser on [fundly.com/projectcure](http://fundly.com/projectcure).

**gather** friends, family, and basic necessities, then fill and drop Kits for Kids at a distribution or collection center near you.

**tell** your friends and followers about Project C.U.R.E. on Facebook, Twitter, Instagram and fundly.

delivering **health & hope** to the world

“Within two days of the container’s arrival, two babies in the neonatal clinic were being kept alive by the materials from the shipment. Over the next weeks and months, more needs will be met because of this valuable shipment.”

—John Chestnut, Family Medical Center  
Pristina, Kosovo



projectc.u.r.e.



delivering **health & hope** to the world



contact us:

303.792.0729

[projectcure.org](http://projectcure.org)



Ranked number 1 [website](#)  
by Charity Navigator, 2013

**Forbes**

20 Most Efficient Large U.S. Charities, 2011

